



## On-site ALEXYS Installation and Training

Are you considering to acquire a new ALEXYS Analyzer? To get it up and running we can offer our highly acclaimed on-site installation and training service. Our 5-day on-site program, led by an Antec application specialist, has received praise from numerous new ALEXYS users.

*'The specialist who helped us was very professional, kind and instructive. The presentations were very informative and we were given clear and understandable answers to the questions asked.'*

We'll help the users get confident to use it and get the best results out of the new ALEXYS Analyzer quickly!

### What do we offer:

- **Correct Installation:** we ensure your ALEXYS system gets installed correctly (IQ/OQ/PQ passed) in the first part of our program.
- **Training:** the second part covers theory of LC-ECD, and intensive hands-on training by our Antec application specialist. No HPLC experience? No problem! We provide a crash course to get everyone up to speed. Colleagues interested in the capabilities of the new equipment can join our theoretical presentation session from the training.

### Who can join this program:

- **Educational Background:** Completed degree as a chemical laboratory technician or equivalent vocational training.
- **Chemical Handling Skills:** Proficiency in the safe handling of toxic and corrosive chemicals.
- **Group Participation:** Up to 3 persons can join the full training, ensuring comprehensive knowledge transfer.

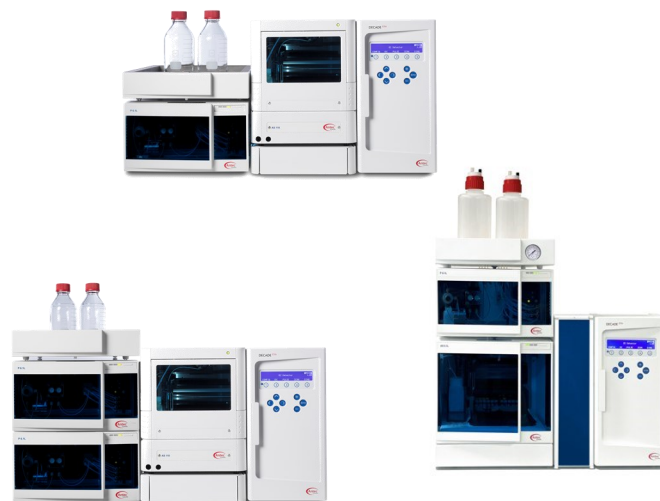


Figure. 1. ALEXYS Analyzers

### Benefits of this program:

The 5-days on-site visit from our application specialist gets the lab and its people ready to confidently start using the system:

- **Effective:** full time dedicated hands-on training from the Antec application specialist ensures proficiency with the system.
- **Time efficient:** the lab and team will be ready to process samples after just one workweek.

In conclusion, our on-site installation and training program serves as your express ticket to confidently run samples using the ALEXYS Analyzer. Experience the quickest and most effective way to harness the full potential of the new equipment.

### Ordering information

901.1014	ALEXYS Analyzer installation/training on site, 5 days
<i>For the system PQ test, a set of consumables are required . Type is dependent on the intended analysis mode (DC or PAD mode)</i>	
250.3048	PQ consumables, ECD in DC mode
250.3046	PQ consumables, ECD on Au at pH 13 (PAD mode)



## On-site ALEXYS Installation and Training

Example of a program for ALEXYS Analyzer installation and training.

Day	Task	Details
INSTALLATION—The primary person responsible for managing the system is encouraged to attend the installation process.		
Monday	SYSTEM BUILD-UP	Build-up hardware Rinse the system Install software Operation Qualification (OQ) and Performance Qualification (PQ)
Tuesday	PERFORMANCE CHECK	Test injections to check chromatography of application System performance check
END-USER TRAINING—3 persons max during hands-on sessions, more persons welcome during presentations		
Wednesday	INTRODUCTION	Presentation of LC-ECD basics and application details Presentation Clarity software Hands-on Clarity software
Thursday	USING ALEXYS, part 1	Introduction to the different ALEXYS system elements and maintenance aspects Hands-on sample analysis, calibration and data processing
Friday	USING ALEXYS, part 2	Hands-on sample analysis, calibration and data processing (rehearsal) Troubleshooting ECD

**Antec Scientific (USA)**  
info@AntecScientific.com  
www.AntecScientific.com  
T 888 572 0012

**Antec Scientific (worldwide)**  
info@AntecScientific.com  
www.AntecScientific.com  
T +31 172 26 8888

